

Universitatea din Oradea	PROCEDURA pentru înființarea, evaluarea și ierarhizarea centrelor de cercetare	COD: SEQ PE-U.03	Revizia										
			1	2	3	4	5	6	7	8	9	10	11
			Aprobat în ședința de Senat nr. 52 martie 2015										



UNIVERSITATEA DIN ORADEA
FACULTATEA DE INGINERIE ENERGETICĂ ȘI
MANAGEMENT INDUSTRIAL
DEPARTAMENTUL DE INGINERIE ENERGETICĂ

<http://www.energetica-oradea.ro/>



RAPORT DE AUTOEVALUARE
pentru perioada 2011-2015

CENTRUL DE CERCETARE
“MANAGEMENTUL PROCESELOR ENERGETICE”

ORADEA, 2016

Cuprins RAE

I. Prezentarea Centrului de Cercetare în conformitate cu HG 551 / 2007 (până la apariția unor reglementări legislative în domeniu)

RAE pentru activitatea desfășurată în perioada 2011 – 2015

1. DATE DE AUTENTIFICARE / IDENTIFICARE ALE UNITĂȚII DE CERCETARE – DEZVOLTARE

1.1.	Denumirea CENTRUL DE CERCETARE: MANAGEMENTUL PROCESELOR ENERGETICE
1.2.	Statutul Juridic Centru de cercetare din cadrul Universității din Oradea
1.3.	Actul de infiintare Titlul CENTRUL DE CERCETARE integrat în cadrul Facultății de Energetică Data emiterii Ianuarie 2008 Organul emitent Consiliul Cercetării al Universității din Oradea Modificari ulterioare
1.4.	Nr. din inregistrare in Registrul potentialilor contractori 1155
1.5.	Director Conf.dr. Calin Secui
1.6.	Adresa Str. Universitatii nr. 1, cod 410087
1.7.	Tel, Fax, Pagina web, E-mail www.uoradea.ro , email: csecui@uoradea.ro

2. DOMENIUL

2.1.	Conform clasificarii UNESCO 33. STIINTE TEHNOLOGICE
2.2.	Conform clasificarii CAEN 71, 72, 73, 58

3. STAREA UNITĂȚII DE CERCETARE – DEZVOLTARE

3.1.	Misiunea unitatii de cercetare dezvoltare, directiile de cercetare, dezvoltare, inovare Coordonarea, gestionarea și valorificarea activităților de cercetare cu caracter fundamental și aplicativ, în următoarele direcții: • Calitatea și fiabilitate sistemelor energetice; • Eficiența proceselor energetice; • Impactul proceselor energetice asupra mediului; Formarea și perfecționarea resurselor umane dedicate gestionării adecvate a proceselor energetice, în cadrul școlilor de masterat și doctorat.
3.2.	Modul de valorificare a rezultatelor de cercetare, dezvoltare, inovare și gradul de recunoastere a acestora Valorificarea rezultatelor cercetărilor se face prin: publicare de lucrări științifice și tratate de specialitate, dotarea laboratoarelor, autoinstruire și învățarea cursanților, venituri din contractele de cercetare, organizarea unor conferințe internaționale care să includă și tematica de cercetare a centrului.

4. CRITERII PRIMARE DE PERFORMANȚĂ

4.1. Lucrări științifice/tehnice publicate în reviste de specialitate cotate ISI

4.1.1 Numar de lucrări științifice: 10, punctaj 10 x 30 puncte = 300

Nr. crt.	Data publicării		Autor(i)	Titlul articolului	Revista ISI	ISSN	Factorul de impact al revistei
	An	Luna					
1.	2015	09	B. Stanojević, I. Dzitac, S. Dzitac	On The Ratio Of Fuzzy Numbers – Exact Membership Function Computation And Applications To Decision Making,	Technological And Economic Development Of Economy, 2015 Vol. 21(5): 815–832, Doi: 10.3846/20294913.2015.1093563	2029-4913	1.563
2.	2015	01	Secui, DC	A New Modified Artificial Bee Colony Algorithm For The Economic Dispatch Problem	En. Con. And Man., Vol. 89, Pag. 43-62, Published: 2015	0196-8904	4.38
3.	2015	02	Secui, DC	A Method Based On The Ant Colony Optimization Algorithm For Dynamic Economic Dispatch With Valve-Point Effects	International Transactions On El. En. Sys., Vol. 25, Issue: 2, Pages: 262-287, Published: 2015	2050-7038	0.49
4.	2014	04	Albu, R. D.; Dzitac, I.; Popentiu-Vladicescu, F.; et al.	Input Projection Algorithms Influence in Prediction and Optimization of QoS Accuracy	International Journal Of Computers Communications, & Control, Volume: 9, Issue: 2, Pages: 131-138, Published: APR 2014	1841-9836	0,746
5.	2014	06	I. Felea; Panea, Crina; Bendea, Gabriel	Stochastic Evaluation Of The Reliability Of The Geothermal Energy Exploitation Systems	Revue Roumaine Des Sciences Techniques-Serie Electrotechnique Et Energetique, Volume: 59, Issue: 2, Pages: 141-151, Published: APR-JUN 2014	0035-4066	0.333
6.	2014	05	I. Felea, Dzitac, Simona; Vesselenyi, Tiberiu; et al.	Decision Support Model for Production Disturbance Estimation	International Journal Of Information Technology & Decision Making, Volume: 13, Issue: 3, Pages: 623-647 Published: MAY 2014	0219-6220	1.406
7.	2014	06	Secui D.C., Bendea, G.; Dzitac, S., Bendea C., Hora C.	A Modified Harmony Search Algorithm For The Economic Dispatch Problem	Studies in informatics and control (With Emphasis on Useful Applications of Advanced Technology), Vol. 23, Issue: 2, pp. 143-152, Jun-2014, ISSN	1220-1766	0.913
8.	2013	10	I. Felea, Csuzi I., E. Barla	Modelling And Assessing Energy Performance Of An Urban Transport System With Electric Drives	Promet – Traffic & Transportation, Vol. 25, 2013, No. 5, Pag. 495 – 506	0353-5320	0,3
9.	2013	04	Pitic A., Moisil I, Dzitac Simona	Raising Energy Saving Awareness Through Educational Software	International Journal Of Computers, Communications & Control, , Volume: 8 Issue: 2, Pages: 255-262, Apr 2013,	1841-9836	0,438
10.	2012	01	Felea I., Fl. Dan, S. Dzitac	Consumers Load Profile Classification Correlated To The Electric Energy Forecast	Proceedings Of The Romanian Academy, Seria A, Volum 13, Nr. 1/2012, Pp. 80-88 CNCSIS A	1454-9069	0.537

Obs. Toate date din tabel sunt pe propria raspundere a membrilor centrului

4.1.3 Numar de citari in reviste de specialitate cotate ISI (citari in perioada de raportare, indiferent cand si unde a fost publicat articolul citat): 30; punctaj 30 x 5 puncte = 150

Nr.	Articolul Citat (An/Luna/Autori/Titlu Articolului/Revista/ISSN)	Articolul Care Citează
-----	---	------------------------

Crt.		Data Publicarii		Autor(I)	Titlul Articolului	Revista ISI	ISSN
		An	Luna				
1	Fuzzy And Neural Controllers For A Pneumatic Actuator By: Vesselenyi, Tiberiu; Dzitac Simona, Dzitac, Ioan; et al.. International Journal Of Computers Communications & Control, Vol. 2, Issue: 4, Pages:375-387, Published: 2007	2015	07	Cao, Liang; Downey, Austin; Laflamme, Simon; Et Al.	Variable Friction Device For Structural Control Based On Duo-Servo Vehicle Brake: Modeling And Experimental Validation	Journal Of Sound And Vibration Volume: 348 Pages: 41-56, Publ. Jul 21 2015	0022-460X
2	Fuzzy And Neural Controllers For A Pneumatic Actuator By: Vesselenyi, Tiberiu; Dzitac Simona; Dzitac, Ioan; et al.. International Journal Of Computers Communications & Control Volume: 2, Issue: 4, Pages:375-387, Published: 2007	2014	06	Ang, C. K.; Tang, S. H.; Mashohor, S.; Et Al.	Solving Continuous Trajectory And Forward Kinematics Simultaneously Based On ANN	International Journal Of Computers Communications & Control, Vol. 9, Issue: 3, Pages:253-260, 2014	ISSN 1841-9836, ISSN-L 1841-9836
3	Fuzzy And Neural Controllers For A Pneumatic Actuator By: Vesselenyi, Tiberiu; Dzitac Simona; Dzitac, Ioan; et al.. International Journal Of Computers Communications & Control, Volume: 2, Issue: 4, Pages:375-387, Published: 2007	2014	02	Kar, Samarjit; Das, Sujit; Ghosh, Pijush Kanti	Applications Of Neuro Fuzzy Systems: A Brief Review And Future Outline	Applied Soft Computing, Vol. 15, Pages: 243-259, 2014	1568-4946
4	Fuzzy And Neural Controllers For A Pneumatic Actuator By: Vesselenyi, Tiberiu; Dzitac Simona; Dzitac, Ioan; et al.. International Journal Of Computers Communications & Control, Volume: 2, Issue: 4, Pages:375-387, Published: 2007	2013	04	Iancu, Ion; Constantinescu, Nicolae	Intuitionistic Fuzzy System For Fingerprints Authentication	Applied Soft Computing, Vol. 13, Issue: 4, Pages: 2136-2142, Published: Apr 2013	1568-4946
5	Crn Kernel-Based Integrated Information System For A Sme: An Object-Oriented Design By: Lupse, Vasile; Dzitac, Ioan; Dzitac Simona; et al.. International Journal Of Computers Communications & Control, Vol. 3, Supplement: S, Pages: 375-380, 2008	2013	02	Nagy, M.; Burca, V.; Butaci, C.; Et Al.	Simulating The Need Of Working Capital For Decision Making In Investments	International Journal Of Computers Communications & Control, Vol. 8, Issue: 1, Pages: 87-96, Pub. Feb 2013	ISSN 1841-9836, ISSN-L 1841-9836
6	Surface Roughness Image Analysis Using Quasi-Fractal Characteristics And Fuzzy Clustering Methods By: Vesselenyi, Tiberiu; Dzitac, Ioan; Dzitac Simona; et al.. International Journal Of Computers Communications & Control, Volume: 3, Issue: 3, Pages:304-316, Published: 2008	2013	12	Dutta, S.; Kanwat, A.; Pal, S. K.; Et Al.	Correlation Study Of Tool Flank Wear With Machined Surface Texture In End Milling	Measurement Volume: 46 Issue: 10 Pages: 4249-4260, Publ. Dec 2013	0263-2241
7	Surface Roughness Image Analysis Using Quasi-Fractal Characteristics And Fuzzy Clustering Methods By: Vesselenyi, Tiberiu; Dzitac, Ioan; Dzitac Simona; et al.. International Journal Of Computers Communications & Control, Volume: 3, Issue: 3, Pages:304-316, Published: 2008	2012	07	Dutta, S.; Datta, A.; Das Chakladar, N.; Et Al.	Detection Of Tool Condition From The Turned Surface Images Using An Accurate Grey Level Co-Occurrence Technique	Precision Engineering- Journal Of The International Societies For Precision Engineering And Nanotechnology, Vol.36, Issue: 3, Pages: 458-466, Pub: Jul 2012.	0141-6359
8	A Modified Harmony Search Algorithm For The Economic Dispatch Problem, By: Secui, Dinu Calin; Bendea, Gabriel; Dzitac, Simona; et al., Studies In Informatics And Control, Volume: 23, Issue: 2, Pages: 143-152, Published: Jun 2014	2015	05	Kucuktezcan, C. Fatih; Genc, V. M. Istemihan	Preventive And Corrective Control Applications In Power Systems Via Big Bang-Big Crunch Optimization	Journal Of El. Power & Energy Systems, Vol. 67, Pages: 114-124 Published: May 2015	0142-0615
9	A New Modified Artificial Bee Colony Algorithm For The Economic Dispatch Problem, By: Secui, DC, En. Conv. and Manag., Vol. 89, Pages: 43-62, Published: Jan 1 2015	2015	11	Meng, Anbo; Mei, Peng; Yin, Hao; Et Al.	Crisscross Optimization Algorithm For Solving Combined Heat And Power Economic Dispatch Problem	En. Con. and Manag., Vol. 105, Pages: 1303-1317, Published: Nov 15 2015	0196-8904
10	A New Modified Artificial Bee Colony Algorithm For The Economic Dispatch Problem, By: Secui, DC, Ener. Conv. and Manag., Vol. 89, Pages: 43-62, Published: Jan 1 2015	2015	07	Mahdad, Belkacem; Srairi, K.	Blackout Risk Prevention In A Smart Grid Based Flexible Optimal Strategy Using Grey Wolf- Pattern Search Algorithms	En. Conv. and Manag., Vol. 98, Pages: 411-429, Pub. Jul 1 2015	0196-8904
11	A New Modified Artificial Bee Colony Algorithm For The Economic Dispatch Problem, By: Secui, DC, En. Conv. and Manag., Vol. 89, Pages: 43-62, Published: 2015	2015	05	Azizipanah-Abarghoee, Rasoul; Niknam, Taher;	Optimal Power Flow Based TU/CHP/PV/WPP Coordination In View Of Wind Speed, Solar Irradiance And Load Correlations	En. Conv. and Manag., Vol: 96, Pages: 131-145, Pub. May 15 2015	0196-8904

				Malekpour, Mostafa; Et Al.			
12	A New Modified Artificial Bee Colony Algorithm For The Economic Dispatch Problem, By: Secui, DC, En. Conv. and Manag., Vol. 89, Pages: 43-62, Published: 2015	2015	11	Li Han, Carlos E. Romero, Zheng Yao	Economic Dispatch Optimization Algorithm Based On Particle Diffusion	En. Conv. and Manag. Volume 105, 15 November 2015, Pages 1251–1260	0196-8904
13	A New Modified Artificial Bee Colony Algorithm For The Economic Dispatch Problem, By: Secui, DC, En. Conv. and Manag., Vol. 89, Pages: 43-62, Published: 2015	2015	12	Thang Trung Nguyen, Dieu Ngoc Vo.	The Application Of One Rank Cuckoo Search Algorithm For Solving Economic Load Dispatch Problems	Applied Soft Computing. Vol. 37, December 2015, Pages 763–773	1568-4946
14	A Method Based On The Ant Colony Optimization Algorithm For Dynamic Economic Dispatch With Valve-Point Effects, By: Secui, DC, Trans. El. Ener. Sys. Vol. 25, Issue:2, Pages: 262-287, Published: FEB 2015	2015	12	Roy, Provas Kumar; Hazra, Sunanda	Economic Emission Dispatch For Wind-Fossil-Fuel-Based Power System Using Chemical Reaction Optimisation	Int.Elect. En. Sys. Vol.25, Issue: 12, Pages: 3248-3274, Publ. Dec 2015	2050-7038
15	A Method Based On The Ant Colony Optimization Algorithm For Dynamic Economic Dispatch With Valve-Point Effects By: Secui, DC, Trans. El. Ener. Sys. Vol. 25, Issue:2, Pages: 262-287, Published: 2015	2015	12	Singhal, Prateek K.; Naresh, Ram; Sharma, Veena	A Modified Binary Artificial Bee Colony Algorithm For Ramp Rate Constrained Unit Commitment Problem	Int.Elect. En. Sys., Vol:25, Issue: 12, Pages: 3472-3491, Published: Dec 2015	2050-7038
16	A Method Based On The Ant Colony Optimization Algorithm For Dynamic Economic Dispatch With Valve-Point Effects By: Secui, DC, Trans. El. Ener. Sys. Vol. 25, Issue:2, Pages: 262-287, Published: FEB 2015	2015	03	Ahmed, Hafiz	Reactive Power And Voltage Control In Grid-Connected Wind Farms: An Online Optimization Based Fast Model Predictive Control Approach	Electrical Engineering, Volume: 97 Issue: 1, Pages: 35-44, Publ. Mar 2015	0948-7921
17	Software Reliability Growth Supermodels By:Popentiu F, Microelectronics And Reliability, Volume: 36, Issue: 4, Pages: 485-491, DOI: 10.1016/0026-2714(95)00068-2, Published: APR 1996	2013	07	Amin, A; Grunskel; Colman, A	An Approach To Software Reliability Prediction Based On Time Series Modeling	Journal Of Systems And Software, Vol: 86, Issue: 7, Pag: 1923-1932	ISSN 0164-1212(Print)
18	Optimum System Availability And Spare Allocation By:Catuneanu Vm, Moldovan C, Popentiu F, Gheorghiu M, Microelectronics And Reliability, Volume: 28, Issue: 3, Pages: 353-357, Published: 1988	2013	11	Werbinska-Wojciechowska, S	Time Resource Problem In Logistics Systems Dependability Modelling	Eksploatacja I Niezawodnosc Maintenance And Reliability Issue: 4, Pages: 427-433	ISSN1507-2711 (Print)
19	Transport Phenomenon Simulation For Linear Polymers Through Nanometer Pores, V.P. Paun, Maria-Alexandra Paun, Antonela Toma, C. Ciucu , Fl. Popentiu Mat. Plast., 45, 1(2008), ISSN: 0025-5289, Pp. 57-60. ISI Indexed	2013	Martie	Radu, Viviana; Bacaita, Simona; Uliniuc, Ancuta; Et Al.	Fractal Hydrodynamic Model For Drug Release Processes From Starch Based Hydrogels	Materiale Plactice, Volume: 50, Issue: 1, Pages: 18-22	ISSN: 0025-5289
20	Transport Phenomenon Simulation For Linear Polymers Through Nanometer Pores, V.P. Paun, Maria-Alexandra Paun, Antonela Toma, C. Ciucu , Fl. Popentiu Mat. Plast., 45, 1(2008), ISSN: 0025-5289, Pp. 57-60. ISI Indexed	2012	09	Nica, Irina; Cimpoesu, Nicanor; Rusu, Valeriu; Et Al.	Structural Properties Of Nanofilled And Microfilled Restorative Composites	Materiale Plactice, Volume: 49, Issue: 3, Pages: 176-180	ISSN: 0025-5289
21	A 3D Simulation Model For Porous Polymer Network Formation, V.P. Paun, Fl. Popentiu Vladicescu, V.A. Paun, Mat. Plast, 46(2), 2009, Pp. 189-191, ISSN: 0025-5289. ISI Indexed.	2013	03	Radu, Viviana; Bacaita, Simona; Uliniuc, Ancuta;	Fractal Hydrodynamic Model For Drug Release Processes From Starch Based Hydrogels	Materiale Plactice, Volume:50, Issue: 1, Pages:18-22	ISSN: 0025-5289
22	A 3D Simulation Model For Porous Polymer Network Formation, V.P. Paun, Fl. Popentiu Vladicescu, V.A. Paun, Mat. Plast., 46(2), 2009, Pp. 189-191, ISSN: 0025-5289. ISI Indexed.	2011	10	Rogojanu, Alina; Dascalu, Carmen Felicia; Zelinschi, Beatrice Carmen	Birefringence And Dichroism Of Poly(Vinyl-Alcohol) Foils Containing Phthalazinium Ylids	Spectrochimica Acta Part A-Molecular And Biomolecular Spectroscopy, Volume: 81, Issue: 1, Pages: 334-338	ISSN: 1386-1425
23	Kinetics And Mechanism Of The Bromate Electrochemical Reduction At Platinum Electrode, Badea GE; Badea T, REVUE ROUMAINE DE CHIMIE, Volume: 51, Issue: 2, Pages: 127-133, Published: FEB 2006	2011	09	Bergmann, M. E. Henry; Iourtchouk, Tatiana; Rollin, Johanna	The Occurrence Of Bromate And Perbromate On BDD Anodes During Electrolysis Of Aqueous Systems Containing Bromide: First Systematic Experimental Studies	Journal Of Applied Electrochemistry, Volume: 41, Issue: 9, Special Issue: Si, Pages: 1109-1123	0021-891X
24	Electrocatalytic Reduction Of Nitrate On Copper Electrode In	2011	05	Estudillo-Wong, L.	Electro-Reduction Of Nitrate Species On Pt-	CATALYSIS	0920-5861

	Alkaline Solution, Badea, Gabriela Elena; ELECTROCHIMICA, ACTA, Volume:54, Issue: 3, Pages: 996-1001, Published: JAN 1 2009			A.; Arce-Estrada, E. M.; Alonso-Vante, N.; Et Al.	Based Nanoparticles: Surface Area Effects	TODAY, Vol.: 166, Issue: 1, Special Issue: SI, Pages: 201-204, Published: MAY 30 2011	
25	D.C. Secui, Felea I., Dzitac S., Popper L., A Swarm Intelligence Approach To The Power Dispatch Problem, International Journal Of Computers Communications&Control, Vol. 5, Issue:3, Pp. 375-384, Sep.2010, ISSN: 1841-9836	2013	06	Tuba, Milan; Jovanovic, Raka	Improved ACO Algorithm With Pheromone Correction Strategy For The Traveling Salesman Problem	International Journal Of Computers Communications & Control, Volume: 8, Issue: 3, Pages: 477-485	1220-1766
26	D.C. Secui, Felea I., Dzitac S., Popper L., A Swarm Intelligence Approach To The Power Dispatch Problem, International Journal Of Computers Communications&Control, Vol. 5, Issue:3, Pp. 375-384, Sep.2010, ISSN: 1841-9836	2014	06	Secui, Dinu Calin; Bendea, Gabriel; Dzitac, Simona; Et Al	A Modified Harmony Search Algorithm For The Economic Dispatch Problem	Studies In Informatics And Control, Volume: 23, Issue: 2, Pages: 143-152, Published: Jun 2014	1220-1766
27	Secui DC, Dzitac S, Bendea GV, Dzitac I., An ACO Algorithm For Optimal Capacitor Banks Placement In Power Distribution Networks, Studies In Informatics And Control, Volume:18, Issue:4, Pages:305-314, Dec 2009 (ISI)	2012	06	Bacanin Nebojsa; Tuba Milan	Artificial Bee Colony (ABC) Algorithm For Constrained Optimization Improved With Genetic Operators	Studies In Informatics And Control Volume: 21 Issue: 2, Pages: 137-146	1220-1766
28	Secui DC, Dzitac S, Bendea GV, Dzitac I., An ACO Algorithm For Optimal Capacitor Banks Placement In Power Distribution Networks, Studies In Informatics And Control, Volume:18, Issue:4, Pages:305-314, Dec 2009 (ISI)	2014	03	S. Milos; T. Milan.	Parallelized Multiple Swarm Artificial Bee Colony Algorithm (MS-ABC) For Global Optimization	Studies In Informatics And Control, Volume: 23, Issue: 1, Pages: 117-126	1220-1766
29	Secui DC, Dzitac S, Bendea GV, Dzitac I., An ACO Algorithm For Optimal Capacitor Banks Placement In Power Distribution Networks, Studies In Informatics And Control, Volume:18, Issue:4, Pages:305-314, Dec 2009 (ISI)	2014	10	Xianmin Wei, Liqi Han, Lu Hong,	A Modified Ant Colony Algorithm For Traveling Salesman Problem.	Int. Journal Of Computers Communications&Control, Vol. 9, Issue: 5, Pag. 633-643	1220-1766
30	An Application Of Neuro-Fuzzy Modelling To Prediction Of Some Incidence In An Electrical Energy Distribution Center By: Dzitac, Simona; Felea Ioan Et Al. International Journal Of Computers Communications & Control, Vol.3, Supplement: S, Pages: 287-292, Published: 2008	2011	09	Dzitac, I.; Vesselenyi, T.; Tarca, R. C.	Identification Of ERD Using Fuzzy Inference Systems For Brain-Computer Interface	International Journal Of Computers Communications & Control, Volume: 6, Issue: 3, Special Issue: Si, Pages: 403-417	1220-1766

Obs. Toate date din tabel sunt pe propria raspundere a membrilor centrului

4.2. Brevete de invenție

4.2.1 Numar de brevete: 1, punctaj 1 x 30 puncte = 30

Nr. crt.	Data acordarii		Autor(i)	Denumire brevet	Institutia care a acordat brevetul	Tip brevet
	An	Luna				
1	2013	08	Felea I., Rancov N., Haș V., Albuș-Dana D.,	Metodă pentru testarea și determinarea pierderilor de putere în mașina asincronă care funcționează în regim deformant,	Brevet de invenție: Nr. 125637, Data eliberării 30.08.2013, București	2013

4.2.2 Numar de citari de brevete in sistemul ISI (x 5 puncte)

Nr. crt.	Data acordarii		Autor(i)	Denumire brevet	Institutia care a acordat brevetul	Tip brevet
	An	Luna				
1			-	-	-	-

5. CRITERII SECUNDARE DE PERFORMANȚĂ

5.1. Lucrări publicate în reviste de specialitate fără cotație ISI, punctaj 71x 5 puncte= 355

Nr. crt.	Data publicării		Autor(i)	Titlul lucrării	Revista	ISSN	Tipul revistei
	An	Luna					
1.	2015	11	Horea Hora, Cristina Hora, Simona Dzițac	Modeling and simulation of an opto-mechanical system using fem	Annals of Faculty of Engineering Hunedoara – International Journal of Engineering, Fascicula 4,), pag. 175 - 180, 2015	ISSN 1584 – 2665	BDI
2.	2015	11	Horea Hora, Cristina Hora, Simona Dzițac	Image quality of an opto–mechanical system depending on stress and strain state	Annals of Faculty of Engineering Hunedoara – International Journal of Engineering, Fascicula 4, pag. 259 - 262 , 2015	ISSN 1584 – 2665	BDI
3.	2015	12	Pacureanu I., Albuț D.	Solutions to improve the reliability equipment for detecting the line with earthing	Journal of Sustainable Energy, Vol. 6, No. 4, 2015	ISSN 2067-5534	BDI
4.	2015	03	Ionescu G. C., Balota R.S., Lolea M., Barla E.	Interior Rooms Ventilation System Simulation	Journal of Sustainable Energy, vol 6., no. 1, March 2015	ISSN 2067-5534	BDI
5.	2015	10	Felea I., Boja I., Șinca A., Chirea V., Rancov N., Albuț D.	Caracterizarea calității energiei electrice la nivelul unor consumatori din municipiul Oradea	Journal of Sustainable Energy Vol. 6, No. 3, 2015	ISSN 2067-5534	BDI
6.	2015	12	Rancov N., Meianu D.	Monitorizarea parametrilor energiei electrice la un consumator cu un analizor de rețea NA96 cu modul de comunicare ETHERNET	Journal of Sustainable Energy No. 4, December, 2015	ISSN 2067-5534	BDI
7.	2015	03	Felea I, Csuzi I. Secui C., Barla E.	Optimal Dimensioning of Tram Parks, in Public Urban Companies	Journal of Sustainable Energy, vol 6., no. 1, March 2015	ISSN 2067-5534	BDI
8.	2015	12	Moldovan V., Coroiu N., Popovici D., Cîmpan M.	Assessment the impact of connected PV upon electrical values from CCP in Bihor County power systems	Journal of Sustainable Energy, vol 6, Nr. 4, 2015	ISSN 2067-5534	BDI
9.	2015	11	Secui DC, Dumitrescu D, Bunda S.	Democratic PSO Algorithm for the Economic Dispatch Problem With Valve-Point Effects	Journal of Sustainable Energy, vol 6, Nr. 3, 2015	ISSN 2067-5534	BDI
10.	2015	12	Felea, Adrian Ioan	Comparative Analysis Of National And Sectorial Levels Of Competitiveness	Fascicle Of Management And Technological Engineering Volume XXIV (XIV), 2015/3	ISSN 1583 - 0691	BDI
11.	2014	12	R-B.Nagy, Fl.Popentiu-Vladicescu, R.C. Tarca	Survey of Brain Signals and Methods in a Brain Computer Interface	Fascicle of Management and Technological Engineering, Volume XXIII (XIII), 2014/3 pp. 90-93 December 2014, http://www.imtuoradea.ro/uo.fmte/	ISSN 1583 - 0691.	BDI
12.	2104	12	R-B.Nagy, Fl.Popentiu-Vladicescu, R.C. Tarca	Survey of Brain Computer Interface Systems	Fascicle of Management and Technological Engineering, Volume XXIII (XIII), 2014/3 pp. 85-89. December 2014, http://www.imtuoradea.ro/auo.fmte/S copus Indexed.	ISSN 1583 - 0691.	BDI
13.	2104	12	Bunda S.	Power quality issues in wind diesel hybrid power generation systems,	Journal of Sustainable Energy, No. 1, Oradea 2014, BDI (CNCSIS B+)	ISSN 2067-5534	BDI
14.	2014	12	R-D. Albu, Fl.Popentiu-	A Comparative Study for Maximum Mind Speed	Journal of Sustainable Energy,	ISSN 2067-5534	BDI

			Vladicescu, IuliaM Naghiu	Prediction	Vol.4 No. 4, 2014, pp. 178-183, „Scopus Indexed.		
15.	2014	06	G. Albeanu, B. Burtschy, Fl. Popentiu-Vladicescu	Soft Computing Strategies in Multiobjective Optimization	Annals of the " Spiru Haret" University, Mathematics- Informatics Series, 2014	ISSN 1841-7833	BDI
16.	2014	05	Hora H., Hora Cristina	The Finite Element Method Used for Analysis the Triaxial Stress and Strain State,	Annals of the Oradea University, Fascicle of Management and Technological Engineering, volume XXIII(XIII), No. 3, 2014	ISSN 1583-0691	BDI
17.	2014	05	Hora H., Hora Cristina	Abaqus Used in Solving Elasticity Problems of Lens Mounts	Annals of the Oradea University, Fascicle of Management and Technological Engineering, volume XXIII(XIII), No. 3, 2014	ISSN 1583-0691	BDI
18.	2014	12	Felea I., Csuzi I., Dan Fl., Chirea V.	Analyzes on the Energy Performances of OTL Trams	Journal of Sustainable Energy, Vol.V, Nr.4, December, 2014,	ISSN 2067-5534	BDI
19.	2014	03	Felea I., Panea C., Bendea G., Moldovan V., Cîmpan M.	Stochastic Reliability Modeling Of Renewable Energy Sources - Applications To Electro-Geothermal Groups	Journal of Sustainable Energy, Vol.V, Nr.1, March, 2014,	ISSN 2067-5534	BDI
20.	2014	06	Bunda Ș., Felea I.	Reliability Modeling And Simulation Of The Hybrid Power Systems	Journal of Sustainable Energy, Vol.V, Nr.2, June, 2014,	ISSN 2067-5534	BDI
21.	2014	12	Coroiu N.,Tucudean A	Definirea posturilor în industria energetică și recrutarea personalului	Journal of Sustainable Energy. Vol. 4, 2014, Oradea	ISSN 2067-5534	BDI
22.	2014	12	Ionescu C., Balota R.S., Lolea M., Barla E.,	Building Solar Exposure Simulation in the North Western Part of Romania,	Journal of Sustainable Energy, Vol.V, nr.4, December, 2014, BDI, Ulrich's Update – Periodicals Directory, DOAJ, EBSCO Publishing, Google Scholar	ISSN 2067-5534,	BDI
23.	2014	12	. Barla Eva	Designing and Optimizing a Photovoltaic – Biomass Hybrid System	, Journal of Sustainable Energy, Vol.V, nr.4, December, 2014, BDI, Ulrich's Update – Periodicals Directory, DOAJ, EBSCO Publishing, Google Scholar	ISSN 2067-5534	BDI
24.	2013	01	R-D Albu, Fl. Popentiu-Vladicescu	A prototype for web services reliability prediction	International Journal of Information and Communication Technology, Vol. 5, No. 1, 2013, pp. 64-74, http://www.inderscience.com/jhome.php?jcode=ijict	ISSN online: 1741-8070, ISSN print: 1466-6642	BDI
25.	2013	06	R-D. Albu, Fl.Popentiu-Vladicescu, Iulia Maria. Naghiu,	A Comparative Study for Maximum Mind Speed Prediction	Journal of Sustainable Energy Volume 4, No. 4, June, 2013	ISSN 2067-5534	BDI

26.	2013	06	Bendea G., Secui C., Bendea C.	Multi-States Reliability Model for Turbogenerator Groups, Journal of	Journal of Sustainable Energy Volume 4, No. 2, June, 2013	ISSN 2067-5534	CNCSIS B+
27.	2013	12	Coroiu N., Tigan P. I.	Diversity And Efficiency In Energetical Projects	Journal Of Sustainable Energy Volume 4, No. 3, 2013	ISSN 2067-5534	CNCSIS B+
28.	2013	12	Coroiu N.	Technical And Economical Analysis Of The Wind Turbines Interconnection With The Windfarm Substation	Journal Of Sustainable Energy Volume 4, No. 4, 2013,	ISSN 2067-5534	CNCSIS B+
29.	2013	11	I. Felea, Fl. Dan	Identificarea prin AEE a specificității electroenergetice a unei turnătorii	Energetica, vol. 61, pg. 427-438, nr.11/2013,	ISSN: 1453-2360	CNCSIS B
30.	2013	04	Hora C, Dzițac Simona, Secui C, Bendea G	Reliability analysis of spherical valve (VS) from HPP Remeți using Monte Carlo simulation	Acta Technica Corviniensis - Bulletin Of Engineering, fascicule 2, [april-june], 2013 pg.121/124,	ISSN 2067-3809	BDI
31.	2013	03	Bendea C., Rosca M., Bendea G., Karytsas K.	Solar Energy Used For Heating And Cooling Systems	Nonconventional Technologies Review Volume XVII, nr.1/2013, pg.10 – 15 (Index Copernicus; Ulrich's Update - Periodicals Directory),	ISSN 1454-3087	CNCSIS B+
32.	2013	03	Barla Eva	Study About Electric Energy Production With Photovoltaic Systems	Nonconventional Technologies Review, Vol. XVII, Review nr.1/2013, pp. 51 - 55, 2013,	ISSN 1454-3087	B+, BDI
33.	2012	12	Felea I., C. Panea	Stochastic Analysis Upon The Feasibility Of The Geothermal Energy Exploitation	Journal of Sustainable Energy, Vol.III, Nr.4	2067-5534	CNCSIS B+ , BDI
34.	2012	09	Felea I., I. Csuzi, G. Bendea, E. S. Silaghi	The Reliability Modeling Of Urban Transport Systems Using Electrically Driven Trams	Journal of Sustainable Energy, Vol.III, Nr.3	2067-5534	CNCSIS B+
35.	2012	12	Felea I., I. Csuzi, E.S. Silaghi	Energy Efficiency Assessment for an Urban Electric Transport System, , vol. 60, nr. 04, 2012, pag 152 – 159	Revista Energetica	ISSN: 1453-2360	CNCSIS B+, BDI
36.	2012	10	Felea I., I. Csuzi, E.S. Silaghi	Global indicators used for the availability performance evaluation of an urban transport system using electrically driven trams,	Buletinul AGIR, pag. 447 – 455	1224-7928	BDI
37.	2012	03	Felea I., I. Csuzi, C. Secui, G. Bendea	Synthesis Study on the Operational Reliability of an Urban Transport System Using Electrically Driven Trams	Journal of Sustainable Energy, Vol.III, Nr.1, March, 2012	2067-5534	CNCSIS B+. BDI
38.	2012	07	Felea I., E.M. Barla, A. Felea	Proposes to define the competitiveness indicators in power engineering	Buletinul AGIR, 2012, pag. 439 – 447	1224-7928	BDI
39.	2012	01	Dumitrescu D., Hora C.	The integration and development of energy marketing in the context of the exploitation of renewable energy sources	Annals of the Oradea University, Fascicle of Management and Technological Engineering, volume XI(XXI), No. 1, 2012, pg. 36-40	1583-0691	CNCSIS B+
40.	2012	02	Hora C., Dumitrescu D.,	The operational reliability of equipment from hydro	Annals of the Oradea University,	583-0691	CNCSIS B+

			Hora H.	power plants structure	Fascicle of Management and Technological Engineering, volume XI(XXI)		
41.	2012	09	Bunda, S., Bendea G.	Influence Factors on Cost in Designing of the Hybrid Power Systems	Journal of Sustainable Energy (ISSN), Volume 3, No. 3	2067-5534	CNCSIS B+, BDI
42.	2012	09	Panea C., Dziřac Simona, Barla E.,	Reability analysis of a geothermal binary power plant, no.4, from svartsengy, using Monte Carlo simulation	Journal of Sustainable Energy vol. 3,no. 3, september, 2012	2067-5534	CNCSIS B+, BDI
43.	2012	10	Popovici Daniel, Biro Cornelia, Lolea M.	Behavior Of Peach-Tree In Nursery, Grafted On Dwarf Rootstock, Obtained At Research-Development In Fruits Growing Station Of Oradea	Annals of Faculty of Engineering Hunedoara, Fascicule 3, Tome X, http://annals.fih.upt.ro/ANNALS-2012-3.html	1584-2673	CNCSIS B+
44.	2012	12	Secui D. C., Bendea G.	Sensitivity Analyzes of Reliability for a Type Structure of the Electrical Distribution Station	Journal of Sustainable Energy, pp. 211- 215, Vol.III, Nr.4, 2012	2067-5534	BDI, CNCSIS B+
45.	2011	03	Felea I., Oltean M., Secui C	Experimental research of the electric stress level impact on traditional state parameters of power transformers	Journal of Sustainable Energy, Vol.II, Nr.1,	2067-5534	CNCSIS B+, BDI
46.	2011	03	FeleaI., Pacureanu I., Albut Dana D., Barla E.	Assessment Of High Voltage Equipments Operational Reliability Within The Management Of Brasov SDEE	Journal of Sustainable Energy, Vol.II, Nr.1,	2067-5534	CNCSIS B+, BDI
47.	2011	03	Felea I., Rancov. N.	Energetic Performances Simulation Of A Technological Line Composed By Asynchronous Motors, Powered Up In Harmonic Regime	Journal of Sustainable Energy, Vol.II, Nr.1,	2067-5534	CNCSIS B+, BDI
48.	2011	06	Felea I., Albut Dana D., Barla E.	Solutions To Improve The Efficiency Of Industrial Consumers. S.C. Celestica Romania S.A. - Case Study	Journal of Sustainable Energy, Vol.II, Nr.2,	2067-5534	CNCSIS B+, BDI
49.	2011	06	Felea I., Goia E., Ciobanca A.	Development Of Operational Reliability Of The Structure Of Transport Equipment And Manufacture Of Solid Fuel From Electric Central Heating Oradea	Journal of Sustainable Energy, Vol.II, Nr.2,	2067-5534	CNCSIS B+, BDI
50.	2011	06	Felea I., Goude Y., Dan Fl.	Electric Energy Forecast For The Industrial Consumers Using Neural Network	Journal of Sustainable Energy, Vol.II, Nr.2,	2067-5534	CNCSIS B+, BDI
51.	2011	12	Felea I., Bendea G., Chereches O., Bendea C., Almasan I.	Considerations Regarding The Recovering Of Power Transformers Power Losses From HV / MV Electric Stations	Journal of Sustainable Energy, Vol.II, Nr.4	2067-5534	CNCSIS B+, BDI
52.	2011	12	Felea I., Secui D.C. Oltean M	The Impact Analyze Of Electric Stress Level In Content Of Insulating Oil Gases In Power Transformers	Journal of Sustainable Energy, Vol.II, Nr.4 http://www.energy-cie.ro	2067-5534	CNCSIS B+, BDI
53.	2011	03	Mariut L., Helerea E., Felea I.	Underground Power Cables-Life Analysis And Reliability Prognosis	Pollack Periodica, An International Journal for Engineering and Information Sciences, Scopus, DOI: 10.1556/Pollack.6.2011.3.x, Vol. 6, No. 3	1788-1994 on-line 1788-3911	BDI
54.	2011	06	Focze, D. Albuř-Dana, T. Pazitor, I. Sava	Customer management and development at energy market level and power exchange	JSE, Vol.II, Nr.1, pg.95-99 http://www.energy-cie.ro	2067-5534	CNCSIS B+, BDI
55.	2011	06	Barla E., Albuř-Dana D.	Researches viewing the optimization of electric	Journal of Sustainable Energy,	2067-5534	CNCSIS B+, BDI

				energy producing with PV panels	Vol. II, No. 2, pg. 30 – 35, 2011		
56.	2011	12	Coroiu N.	Solutions for connecting offshore wind farms to the grid	Journal of Sustainable Energy, Vol. II, No. 4	2067-5534	CNCSIS B+, BDI
57.	2011	12	Coroiu N.	Scada - supervisory control and data acquisition.	Journal of Sustainable Energy, Vol. II, No. 4	2067-5534	CNCSIS B+, BDI
58.	2011	03	Hora Cristina, Dziţac Simona, Dumitrescu Dan, Hora Horia	Reliability analysis of cut-off plate (vir) from hpp tileagd using Monte Carlo simulation	Journal of sustainable energy vol. II, no. 1	2067-5538	CNCSIS B+
59.	2011	mai	Hora Cristina, Dziţac Simona, Dumitrescu Dan, Hora Horia	Reliability analysis of hydro - generator groups using monte carlo simulation	Annals of the Oradea University, Fascicle of Management and Technological Engineering Volume X (XX), nr.2, pag. 3.24-29	1583 – 0691	CNCSIS B+
60.	2011	Mai	Dumitrescu Dan, Hora Cristina, Dziţac S., Hora H.	Specificity of strategic alternatives in delayed products marketing	Annals of the Oradea University, Fascicle of Management and Technological Engineering, Volume X (XXnr.2, pag. 5.78-83,	1583 – 0691	CNCSIS B+
61.	2011	Februarie	R.D.Albu, Fl. Popentiu Vladicescu	High Reliability Single-Phase Uninterruptible Power Supply	Journal of Electrical and Electronics Engineering Research, Vol, 3(2), pp.18-26, Genamics Journal Seek	2141-2367	BDI
62.	2011	Martie	H.Madsen, G. Albeanu, Fl. Popenţiu-Vlădicescu	An Intuitionistic Fuzzy Methodology for Component-Based Software Reliability Optimization	International Journal of Performability Engineering , 2011, Published be RAMS SCOPUS, Google Scholar, ProQuest and INSPEC Indexed	2124-2513	BDI
63.	2011	Decembrie	R.D.Albu, Fl. Popentiu, G. Kalmutchi	A Recurrent Neural Network Approach for Short-term Wind Power Prediction	Journal Of Sustainable Energy Vol. 2, No. 4,	2067-5534	BDI
64.	2011		R.D. Albu, Fl.Popentiu-Vladicescu	Improving Learning Efficiency Using Bayesian Networks	Computers Science and Control Systems, (JCSCS), Oradea, Copernicus	1844-6043.	BDI
65.	2011	Mai	E.I. Gergely , Laura Coroiu , Fl. Popentiu-Vladicescu	Methods for Validation of PLC Systems	Journal of Computer Science and Control Systems, Vol. 4, Nr. 1, pp. 47-52, University Press, Copernicus	1844-6043.	BDI
66.	2011	Mai	Albu Razvan-Daniel, Popenniu-Vldicescu Florin	Learning Efficiency Using Bayesian Networks	Journal of Computer Science and Control Systems, Vol. 4, Nr. 1, pp. 7-12, Copernicus	1844-6043.	BDI
67.	2011	Decembrie	Veres M., Turcan R., Dumitrescu D	The dynamic analysis of a hydro aggregate	Journal of Sustainable Energy, vol.2, no.4	2067-5534	CNCSIS B+
68.	2011	Decembrie	Veres M., Turcan R., Dumitrescu D.	Critical analysis of vibration sources of hydro aggregates in operating regime	Journal of Sustainable Energy, vol.2, no.4	2067-5534	CNCSIS B+
69.	2011	Ian	Barla E.	The Influence Of The Manufacturers On The	Nonconventional Technologies	454-3087	CNCSIS B+

				Performances Of The Photovoltaic Systems	Review – no. 1/2011, pg. 17 - 22		
70.	2011	Octombrie	Felea I., Dale E., Coroiu N., E. Barla	Evaluarea gradului de afectare a eficienței rețelelor electrice de distribuție în regim deformant și nesimetric	Revista Energetica nr.10/ 2011, pag 352 - 357	1453-2360	CNCSIS B+
71.	2011	Decembrie	Dumitrescu D., Hora Cristina	Risk analysis elements in the management of renewable energy sources	Journal of Sustainable Energy, vol. II, No. 4, Dec., 2011, pg. 1-5	2067-5534	CNCSIS B+

Obs. Toate date din tabel sunt pe propria raspundere a membrilor centrului

5.2. Lucrări științifice prezentate la conferințe internaționale cu comitet de program; nr. total lucrari: 44; punctaj: 44x 5 puncte = 220

Nr. crt.	Data publicării		Autorii	Titlul lucrării	Conferința
	An	Luna			
1.	2015	07	Benta D., Bologa G., Dzitac S., Dzitac I.	University Level Learning and Teaching via E-Learning Platforms	3rd International Conference on Information Technology and Quantitative Management, ITQM 2015 - Rio de Janeiro, Procedia Computer Science, Volume 55C, 2015, Pages 1366-1373, Proc. ISI
2.	2015	04	Bendea, C., Rosca, M., Iacobescu, A., Bendea, G.	Cascaded Uses of Geothermal Water in Iosia District	Proceedings World Geothermal Congress 2015 Melbourne, Australia, 2015 (Google Scholar)
3.	2015	05	Felea, AI	Analysing Romanian Industrial Competitiveness Regarding The Recent Dynamics Of The International Industrial Trade Balance	The University of Oradea, Faculty of Economic Sciences, Oradea, Romania, (2015) [online] http://anale.steconomieuoradea.ro/volume/2015/Volum-Abstracts-EINCO-2015.pdf
4.	2015	05	Felea, AI	Analysis Of The Recent Evolution Of Romanian Competitiveness Compared To Certain Reference States	The University of Oradea, Faculty of Economic Sciences, Oradea, Romania, (2015) [online] http://anale.steconomieuoradea.ro/volume/2015/Volum-Abstracts-EINCO-2015.pdf ,
5.	2014	August	H. Madsen, G. Albeanu, and Fl. Popentiu-Vladicescu	BIO Inspired Algorithms in Reliability	In H. Pham (ed.) Proceedings of the 20th ISSAT International Conference on Reliability and Quality in Design , Reliability and Quality in Design, pp.1-5, August 7-9, 2014, Seattle, WA, U.S.A.Scopus Indexed.
6.	2014	Iunie	Ildiko Pasc, L. Csokmai , Fl. Popentiu-Vladicescu and R.C. Tarca	Augmented Reality Used for Robot Remote Control in Educational Laboratories	The 6th International Conference Advanced Concepts in Mechanical Engineering, ACME 2014, Applied Mechanics and Materials Vol. 658 (2014), pp 672-677 June 12 13, 2014, Iasi, Romania, Trans Tech Publications, http://www.mec.tuiasi.ro/acme2014 . ISI Indexed.
7.	2014	iunie	Coroiu N., Tigan P.I	Diversity management in energy companies	Proceedings of the 3rd International Conference on Environment, Ecosystems and Development (EED 2014) pag. 215, Brașov, Romania iunie 26-28, 2014
8.	2014	iunie	Coroiu N.	Opportunities for building off-shore wind farms in Romania	Proceedings of the 3rd International Conference on Energy and Environment Technologies And Equipment (EEETE 2014) pag. 117, Brașov, Romania iunie 26-28, 2014
9.	2014	iunie	Coroiu N.	Technical and economical analysis of the wind turbines interconnection with the	Proceedings of the 3rd International Conference on Energy and Environment Technologies And Equipment

				windfarm substation	(EEETE 2014) pag. 25, Braşov, Romania iunie 26-28, 2014
10.	2013	August	Felea I., Secui D.C., Ciobanca, Goia E.	Study on Operational Reliability of Steam Boilers from Oradea CHP Plant	Recent Advances in Intelligent Control, Modelling and Computational Science, Proceedings of the 1st International Conference on Intelligent Control, Modelling and Systems Engineering (ICMS '13), Valencia, Spain, August 6-8, pp.59-64, 2013, ISSN: 2227-4588, ISBN: 978-960-474-319-3, (http://www.wseas.org/multimedia/books/2013/Valencia/ICCS.pdf)
11.	2013	Aprilie	R.D. Albu, Fl. Popentiu-Vladicescu	Acomparative study for web services response time prediction	The 9th International Scientific Conference eLSE "eLearning and Software for Education", , Bucharest, April 25-26 2013, Vol 1, pp, 656-665, University Publishing House
12.	2013	Aprilie	G. Albeanu, Fl. Popentiu-Vladicescu	Performability metrics for online services in education	The 9th International Scientific Conference eLSE "eLearning and Software for Education", , Bucharest, April 25-26 2013, Vol 2, pp, 29-34, University Publishing House
13.	2013	Iulie	R.D. Albu , I. Felea ,Fl. Popentiu-Vladicescu	On the Best Adaptive Model for Web Services Response Time Prediction	IWSSIP 2013, 20th International Conference on Systems, Signals and Image Processing, IEEE Catalog Number: CFP1355E-CDR, pp.39-42,
14.	2013	iulie	H. Madsen, G. Albeanu, and Fl. Popentiu-Vladicescu	Reliability in the Utility Computing Era: Towards Reliable Fog Computing	IWSSIP 2013, 20th International Conference on Systems, Signals and Image Processing, IEEE Catalog Number: CFP1355E-CDR, pp.43-46,
15.	2013	octombrie	R.D. Albu , I. Felea ,Fl. Popentiu-Vladicescu, Iuliana Maria Naghiu	An efficient adaptive model for wind speed forecasting	ESREL 2013 Safety, Reliability and Risk Analysis: Beyond the Horizon, 29 September – 2 October 2013, Amsterdam, Netherlands, pp. 3213 - ,3217, , Taylor & Francis Group.
16.	2013	octombrie	H. Madsen, R.D. Albu, Fl. Popentiu-Vladicescu	On the best learning algorithm for web services response time prediction	ESREL 2013 Safety, Reliability and Risk Analysis: Beyond the Horizon, 29 September – 2 October 2013, Amsterdam, Netherlands, pp. 3229-3234, Taylor & Francis Group.
17.	2013	Iunie	A. Ciobanca, I. Felea, G. Bendea	Optimizing the District Heating Network in Oradea Municipality	Energetic and Environment Impact, WSEAS, Proceedings of the 2 nd International Conference on Energy and Environment Technologies and Equipment, Brasov, Romania, Iunie 1-3, 2013
18.	2013	Martie	Bendea, G., Prada, M., Bendea, C., Secui, C.	Ground Coupled Heat Pump Systems – A Key for a Sustainable Development of Heating and Cooling Buildings,	Recent Advances in Environmental Science - Proceedings of the 9 th International Conference on Energy, Environment, Ecosystems and Sustainable Development Lemesos, Cyprus, March, 2013, pp. 133-138
19.	2013	Februarie	Prada, M.F., Bendea, G.	Energy Education for a New Culture for the Residential Buildings	Recent Advances in Educational Methods - Proceedings of the 10 th International Conference on Engineering Education, Cambridge, UK, February, 2013, pp. 116-119
20.	2013	August	I. Felea, A. Ciobanca, E. Goia	Assessment of Basic Technological Subsystem's Forecasted Reliability in CHP	Plant, Proceedings of the 1st International Conference in Intelligent Control, Modelling and Systems Engineering

					(ICMS'13); ISSN: 2227-4588; ISBN: 978-960-474-319-3, Valencia, Spain, August 6-8, 2013, pp. 59-64
21.	2013	Iunie	Panea, C., Rosca, M., Moldovan, V., Bendea, G., Ciobanca, A.:	Analysis of plate heat exchangers situated in the geothermal district heating system – Iosia, Oradea,	WSEAS-Advances in Environment Technologies, Agriculture, Food & Animal Science, Proceedings of the 2 nd International Conference on Energy and Environment Technologies and Equipment (EEETE '13), Brasov, România, Iunie 1-3, 2013, pp. 47 -55.
22.	2012	iulie	Grigore Albeanu, Florin Popentiu – Vladicescu, Bernard Burtschy	Soft Computing Strategies in Multiobjective Optimization	InProceedings of MASR (MODELLING and ANALYSIS of SAFETY and RISK in COMPLEX SYSTEMS), July 03 - July 07, 2012, Saint-Petersburg, Russia. 2012
23.	2012	December	C. Panea, I. Felea, I. Almasan, ,	The Simulation of Processes and Performances within Low Enthalpy Geothermal Power Plants	ICFMEME, Beijing, China, ISI Proceedings
24.	2012	June	H. Madsen, R.D. Albu, I. Felea, Fl. Popentiu-Vladicescu	A New Ensemble Model For Short Term Wind Power Prediction	PSAM 11&ESREL 2012, 25-29, Helsinki, Finland, ISI Indexed Proceedings
25.	2012	Aprilie	G. Albeanu, Fl. Popentiu-Vladicescu	Cloud-based e-Learning Tools for data analysis, The 8th International	Scientific Conference eLSE "eLearning and Software for Education", Vol I, pp. , Bucharest, 26-27, University Publishing House, ISSN 2066-026X. ISI Indexed Proceedings
26.	2012	Aprilie	G. Albeanu, Fl. Popentiu-Vladicescu	Recent soft computing approaches in digital learning object evaluation	The 8th International Scientific Conference eLSE "eLearning and Software for Education", Vol I, pp. Bucharest, University Publishing House, ISSN 2066-026X. ISI Indexed Proceedings
27.	2012	Iunie	H.Madsen, G. Albeanu, Fl. Popentiu - Vladicescu, R-D. Albu	Optimal Reliability Allocation for Large Software Projects through Soft Computing Techniques	PSAM 11 & ESREL 2012 , 25-29 June 2012, Helsinki, Finland. ISI Indexed
28.	2011	Aprilie	R. C. Tarca, I. Tarca, Fl. Popentiu Vladicescu, C. Lehel	A Three-dimensional Hand Position Sensing System Used to Control an Autonomous Robot	The 7th International Scientific Conference eLSE "eLearning and Software for Education", Vol I, pp. 552-557 , Bucharest,University Publishing House, ISSN 2066-0026X, ISI Indexed
29.	2011	Martie	I. Felea, E. Dale, C. Secui, E. Barla	The Evaluation Of Damages Caused By The Existence Of Nonsymmetrical And Deforming regimes	International Conference On Energy, Environment, Devices, Systems, Communications, Computers (EEDSCC '11), Martie 2011, Italia-Venice, pp. 185-190, Baza de date: Scopus (BDI)
30.	2011	Mai	Indrie, L., Prichici, M., Secan, C, Almășan, I.	Modelling the automated operation of flax and hemp processing centre during a typical winter day	The 15th Inter. Conference “Modern Technologies, Quality and Innovation – New face of TMCR”, pp. 505-508, Editura Politehniun a Universității Tehnice Gh Asachi, 25-27 May, Iași, 2011, ISSN 2066-3919
31.	2011	Aprilie	G. Albeanu, Fl.Popentiu-Vladicescu	On Designing Learning Objects for a Software Reliability Engineering Course	The 7th International Scientific Conference eLSE "eLearning and Software for Education", Vol I, pp. 105-110 , Bucharest, April 28-29 2011, University Publishing House, ISSN 2066-026X. ISI Indexed.
32.	2011	Septembrie	H. Madsen, R.D. Albu, R. C. Tarca, Fl. Popentiu-Vladicescu, G.Albeanu	Designing a Reliable Protocol for Web Services Based Robots Interconnection	ESREL 2011, Annual Conference, Reliability, Risk and Safety, , Editors: Bérenguer, Grall & Guedes Soares, 18-

					22 September 2011, pp. 2647-2652 , Troyes, France, CRT Press, Taylor & Francis Group, ISBN 978-0-415-68379-1. ISI Indexed.
33.	2011	Septembrie	H. Madsen, R.D. Albu, I. Felea, R. C. Tarca, G. Albeanu, Fl. Popentiu-Vladicescu	Web Servers Reliability Improvements using a Recurrent Neural Network Approach	ESREL 2011, Annual Conference, Reliability, Risk and Safety, , Editors: Bérenguer, Grall & Guedes Soares, 18-22 September 2011, pp. 2685-2690 , Troyes, France, CRT Press, Taylor & Francis Group, ISBN 978-0-415-68379-1. ISI Indexed
34.	2011	Iulie	R.D. Albu, Fl. Popentiu-Vladicescu, Ildiko Margit Pasc	A Model for Learning Efficiency Improvements	MA RS 2011, June 28 - July 2, 2011, pp. 280-285 , Rusian Academy of Sciences, ISBN: 978-5-8088-0627-6, Saint-Petersburg, Russia
35.	2011	Iulie	H.Madsen, V. Velter, G. Albeanu, Fl. Popentiu-Vladicescu, Ildiko Margit Pasc	Recent Soft Computing Techniques in Software Risk Management	MA RS 2011, June 28 - July 2, 2011, pp. 170-175 , Rusian Academy of Sciences, ISBN: 978-5-8088-0627-6, Saint-Petersburg, Russia.
36.	2011	Octombrie	R.D. Albu, Fl. Popentiu-Vladicescu, R.C. Tarca	Reliable RobotControl Protocol	17th Building Services, Mechanical and Building Industry Days, Exhibition and International Conference, 13-14 October 2011, Debrecen, Hungary
37.	2011	Mai	R.D. Albu, Fl. Popentiu-Vladicescu	Improving Learning Efficiency Using Bayesian Networks	International Conference on Engineering of Modern Electrical Systems, (EMES), 26-27 May 2011, Oradea, Romania
38.	2011	Noiembrie	A.Caraban, S. Bungau, G.E.Badea, V.Popa, D.Tarca	Colorimetric and laser interferometry in real time determination of some cations influence over Starch hydrolysis reaction	International Conference of Science, Oradea, 12-14 nov.2011
39.	2011	Noiembrie	M. Sebesan, G.E. Badea, R.Sebesan, A.Setel, S.Hodisan	Chemical analysis of essential oils with high content of phenolic compounds	International Conference of Science, Oradea, 12-14 nov.2011
40.	2011	Noiembrie	A. Cojocaru, I.Maior, S.Caprarescu, I.D.Vaireanu, G.E. Badea	Study of metal stability in choline chloride based ionic liquids	International Conference of Science, Oradea, 12-14 nov.2011
41.	2011	Septembrie	I.Maior, A.Cojocaru, I.Lingvay, C.Lingvay, D.I.Vaireanu, G.E.Badea, S.Caprarescu	Electrodeposition of mineral scales: influence of natural extracts composition on antiscalent properties	17 th Romanian International Conference on Chemistry and Chemical Engineering, September 7-10, 2011, Sinaia, Romania, pg.S3.7.-S.3.18
42.	2011	Septembrie	A.Cojocaru, I.Maior, D.I.Vaireanu, I.Lingvay, C.Lingvay, S.Caprarescu, G.E.Badea	A comparative study on corrosion inhibition properties of Fagus Sylvatica as influenced by extraction solvent	17 th Romanian International Conference on Chemistry and Chemical Engineering, September 7-10, 2011, Sinaia, Romania, pg.S3.35.-S.3.44
43.	2011	Octombrie	G.E.Badea, A.Setel, M.,Sebesan, P.Cret, M.Lolea, H.Covaci	Corrosion studies in atmospheric environment	Proceedings of the17 th Urban Energy Conference, "Building Services, Mechanical and Building Industry days", 13-14 oct, 2011, Debrecen, Hungary, ISBN 978-963-313-039-1, pg. 111-119.
44.	2011	Iunie	Bendea, C., Rosca, M.,Bendea, G	Geothermal Energy Utilization in Border Area	International Conference on Alternative Energy Based Heat and Electricity Production in the Border Area, Oradea, 2011

Obs. Toate date din tabel sunt pe propria raspundere a membrilor centrului

6. PRESTIGIUL PROFESIONAL

6.1.	Membrii (incluzand statutul de recenzor) in colectivele de redactie ale unor reviste (cotate ISI sau incluse in baze de date internationale) sau in colectivele editoriale ale unor edituri internationale recunoscute; 87x20 puncte = 1740 puncte
	<p>Felea Ioan – Editor sef, Journal of Sustainable Energy (BDI), 2011-2015; (5x20p) Felea Ioan - Recenzor al revistei Journal of Sustainable Energy 2011 – 2015; (5x20p) Popentiu Florin – Membru in Journal of Sustainable Energy (BDI), 2011-2015; (5x20p) Badea Gabriela - Recenzor Chemosphere (ISI) - august 2011; (1x20p) Badea Gabriela – Membru in Journal of Sustainable Energy (BDI,2011) (1x20p) Vereş Mircea – Membru in Journal of Sustainable Energy (BDI), 2011-2014; (4x20p) Bendea Gabriel – Membru in Journal of Sustainable Energy (BDI), 2011-2015; (5x20p) Secui Călin – Membru in Journal of Sustainable Energy (BDI), 2011-2015; (5x20p) Secui Calin – Recenzor in Int. Journ. El. Pow. En. Sys (IJEPES), Int Journ. IJARAI, Int. Trans. El. Ener. Sys (ITEES) (3x20p); Coroiu Nicolae – Membru in Journal of Sustainable Energy (BDI), 2011-2015; (5x20p); Zétényi Zsigmond – Membru in Journal of Sustainable Energy (BDI), 2011-2015; (5x20p); Dzitac Simona - Recenzor la IJCCC /International Journal of Computers, Communications&Control (ISI) -2011- prezent; (5x20p); Dzitac Simona - Editor asociat - Annals of Faculty Engineering Hunedoara – International Journal of Engineering (BDI), 2011 - 2015, (5x20p); Dzitac Simona - Editor - Acta Technica Corviniensis – Bulletin Of Engineering, (CNCSIS B+, BDI); 2011 – 2015 (5x20p); Dzitac Simona – Editor executiv, Journal of Sustainable Energy (BDI), 2011÷2015; (5x20p); Dzitac Simona - Recenzor al revistei Journal of Sustainable Energy 2014, 2015; (2x20p); Dzitac Simona - Membră în Editorial Board la Revista International Journal of Advanced Intelligence Paradigms, ISSN online: 1755-0394, ISSN print: 1755-0386, Indexată BDI: Scopus, 2013, 2014, 2015 (3x20p); Hora Cristina - recenzor in Journal of Sustainable Energy (BDI), 2013-2015. (3x20p) Albut-Dana Daniel – Membru in Journal of Sustainable Energy (BDI), 2011-2015; (5x20p); Barla Eva – Membru in Journal of Sustainable Energy (BDI), 2011-2015; (5x20p); Moldovan Vasile – Membru in Journal of Sustainable Energy (BDI), 2011-2015. (5x20p).</p>
6.2.	Membrii in colectivele de redactie ale revistelor recunoscute national - categ. B (x 10 puncte)
6.3.	Premii internationale obtinute printr-un proces de selectie
6.4.	Premii nationale sau ale Academiei Romane
6.5.	Conducatori de doctorat membrii ai unitatii de cercetare: 2 x 10 puncte = 20
	2
6.6.	Numar de doctori in stiinta membrii ai unitatii de cercetare 8 x 10 puncte = 80
	8

7. VENITURI REALIZATE PRIN CONTRACTE DE CERCETARE

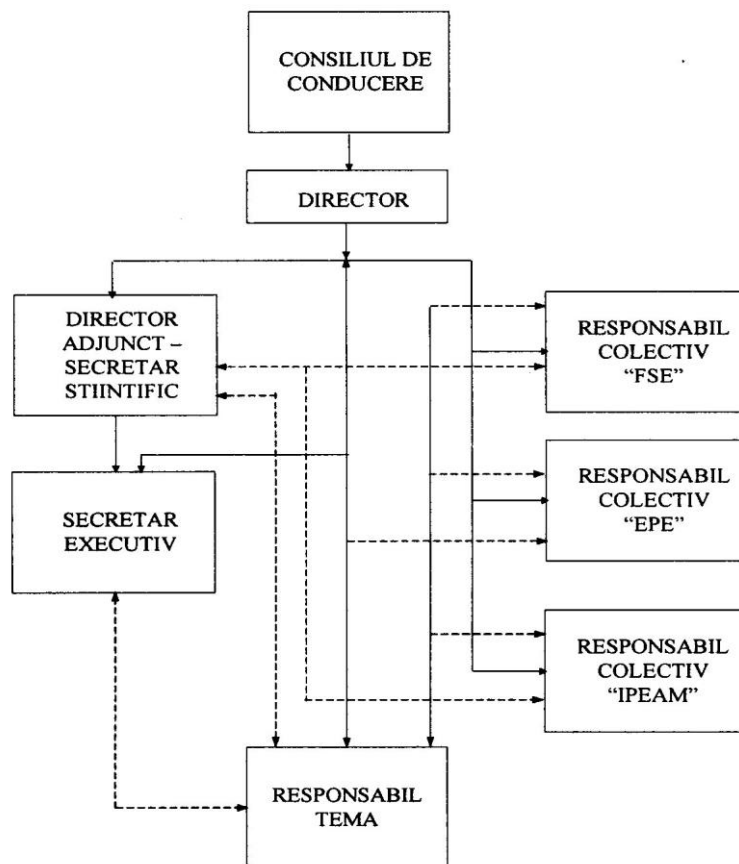
7.1.	Numarul si valoarea contractelor de cercetare internationale finantate din fonduri publice	
	Contract/Tema/Perioada	Valoare (Euro)
	Producerea de energie termica si electrica bazata pe energii alternative in regiunea transfrontaliera” - AltEn_BordR -Director proiect UO: Zétényi Zsigmond; cod HURO0801/084;HURO 2010-2013 Parteneri: Universitatea din Debretin Ungaria	59750
	The hydraulics of local under-washings of longitudinal shore-protecting support structure, 2013. Locul de desfasurare (partial):Universitatea de Stiinte Economice si Tehnice Din Budapesta. Director: Hora Cristina, Bursa de Cercetare acordata de: MTA-OM Domus Hungarica	500
	Geologic Thermal Heating and Electricity with Romanian and MagyarInterregional Cooperation, acronym GEO-THERMIC,Parteneri: Primaria Municipiului Gyula UngariaDirector proiect UO: Zétényi Zsigmond cod HURO/0901/210/2.2.2	85.505
	A fűrögépgyártási folyamatok egyes rendellenességeinek kezelése, , Funcția în cadrul proiectului: director: Dzitac Simona, contract nr.78/2013 bursă Domus Hungarica obținută prin competiție la Academia de Științe a Ungariei, Budapesta	600
7.2.	Numarul si valoarea contractelor de cercetare internationale finantate din fonduri private	
	Contract/Tema/Perioada	Valoare (Euro)
	-	-
7.3.	Numarul si valoarea contractelor de cercetare nationale finantate din fonduri publice	
	Contract/Tema/Perioada	Valoare (RON)
	Granturi nationale	
	Cercetători Români competitivi prin programe doctorale moderne și eficiente –Contract de CDI POSDRU 59/1.5/S/1 2007 – 2013, Manager proiect: Felea Ioan, Contract de CDI POSDRU 59/1.5/S/1	808.078,50
	Cercetători Români competitivi prin programe doctorale moderne și eficiente –Contract de CDI POSDRU 59/1.5/S/1 2007 – 2013, Manager proiect: Felea Ioan, Contract de CDI POSDRU 59/1.5/S/1	1.095.771,5

	Proiecte din PNCDI II	-	-
	Proiecte internationale		-
	Contracte de cercetare/consultanta pentru mediul economic		Valoare (RON)
	Identificarea și caracterizarea poluatorilor cu regim deformant și nesimetric în rețeaua SDEE Oradea, Director: Felea I., 34264 / 05.08.2014, Autoritatea contractanta: S.C. F.D.E.E. „Electrica Distribuție Transilvania Nord” – S.A.		29.000
	Identificarea și experimentarea unor soluții de recuperare a pierderilor de energie în transformatoarele din stațiile electrice, Predare: iunie 2011, Autoritatea contractanta: S.C. F.D.E.E. „Electrica Distribuție Transilvania Nord” – S.A.; Contract nr. 30.947 din 29.03.2010		20.0000
	Studiu privind reconfigurarea rețelelor electrice de MT în funcție de condițiile de exploatare aplicând criteriile CPT minim și nivel de siguranță optim Director – Felea Ioan, Nr. Contract 37258 /09.12.2011, Autoritatea contractanta: S.C. F.D.E.E. „Electrica Distribuție Transilvania Nord” – S.A.		29800
	„Soluții moderne pentru realizare coexistență a LEA 110 kV cu diferite obiective din culoarul de siguranță” Director: Felea I., 448 / 10.10.2014 Autoritatea contractanta: S.C. F.D.E.E. „Electrica Distribuție Transilvania Nord” – S.A.		14.000 Lei
	Evaluarea impactului racordării producătorilor distribuției de energie electrică asupra S.E.N. Director: Coroiu N., 34265 / 05.08.2014, Autoritatea contractanta: S.C. F.D.E.E. „Electrica Distribuție Transilvania Nord” – S.A.		29.800 Lei
7.4	Numarul și valoarea contractelor de cercetare naționale finanțate din fonduri private		
	Contract/Tema/Perioada		Valoarea (RON)
			Total-
7.5	Alte surse		
	Contract/Tema/Perioada		Valoarea (RON)
			Total-
7.6	Venituri realizate din activități economice (servicii, microproductie)		
	Contract/Tema/Perioada		Valoarea (RON)
			Total-

Obs. Toate date din tabel sunt pe propria răspundere a membrilor centrului

8. RESURSA UMANĂ DE CERCETARE (Total personal de cercetare care realizeaza venituri din activitatea de cercetare dezvoltare)

8.1. Organigrama



8.2. Structura de personal

Membri permanenți

1. Felea Ioan	profesor – membru (pina in septembrie 2015)
2. Popentiu Florin	profesor – membru (pina in septembrie 2015)
3. Badea Gabriela	profesor – membru (pina in septembrie 2011)
4. Veres Mircea	profesor- membru (pina in decembrie 2014)
5. Zetenyi Zsigmond	conferentiar – director adjunct
6. Coroiu Nicolae	conferentiar – membru (pina in octombrie 2015)
7. Bendea Gabriel	conferentiar - membru
8. Secui Calin	conferentiar - director
9. Hora Cristina	conferentiar – membru
10. Dzițac Simona	conferentiar - membru
11. Has Viorel	dr. sef lucrari - membru
12. Meianu Dragos	dr. sef lucrari - membru
13. Rancov Nicolae	dr. sef lucrari - membru
14. Albut Daniel	dr. sef lucrari – membru
15. Cîmpan Mihnea	sef lucrari – membru
16. Bunda Șerban	dr. sef lucrari – membru
17. Barla Eva	dr. sef lucrari - secretar stiintific
18. Felea Adrian	dr. Sef lucrari - membru
19. Moldovan Vasile	dr. Sef lucrari ing. – membru
20. Lolea Marius	as.ing. – membru

8.3. Date privind perfecționarea resursei umane

Centrul de Cercetare în domeniul energetic cu denumirea „Managementul Proceselor Energetice” este o entitate de cercetare care are și rolul de a coordona sau de a colabora cu catedrele din cadrul Facultății de Energetică în scopul parcurgerii programelor de formare (învățământ și cercetare) în ciclurile II și III, precum și cursuri postuniversitare de specializare.

9. INFRASTRUCTURA DE CERCETARE – DEZVOLTARE

9.1. Laboratoare de cercetare – dezvoltare

- Diagnoza Tehnică a Mașinilor și Echipamentelor Electrice
- Aparate, Echipamente Și Materiale Electrice
- Electrotehnică, Tehnica tensiunilor înalte, Conversoare statice și elemente de reglare (ETTCER)
- Electroenergetică
- Laborator de Hidraulică, Mecanica Fluidelor și Mașini hidraulice
- Termoenergetică
- Mașini, Acționări Și Măsurări Electrice
- Partea Electrică A Centralelor Electrice
- Proiectare Asistată De Calculator În Energetică
- Simularea Și Optimizarea Proceselor Energetice
- Programarea Și Utilizarea Calculatoarelor În Energetică (PUCE)

9.2. Lista echipamentelor performante achiziționate în ultimul an

- Debitmetru ultrasonic portabil
- Echipament complex pentru verificarea instalațiilor electrice de JT – Fluke 1653B
- Aparat pentru măsurarea prizelor de pământ – P01126504 – CA 6472
- Echipament verificare instalații electrice P01145450 – CA6116
- Cronometru digital portabil – PTE – 30 – CH
- Fazmetru numeric portabil – PME – 20 – PH
- Tahometru digital – 17.550 – CT 100E C
- Analizor întrerupător putere – PME – 500 – TR
- Cameră de termoviziune profesională - FLUKE TI32
- Echipament trifazic pentru măsurare raport de transformare – TRT 30
- Aparat măsurarea câmpului magnetic și electric – CA42 – CA42

10. CENTRALIZATOR PUNCTAJ CENTRU DE CERCETARE (a se lista pe o singura pagina)

Capitol	Paragraf	Subparagraf	Punctaj	Punctaj / membru
4				
	4.1			
		4.1.1	300	15
		4.1.2	0	0
		4.1.3	150	7.5
	Total punctaj 4.1.		450	22.5
	4.2			
		4.2.1	30	1.5
		4.2.2	0	0
	Total punctaj 4.2.		30	1.5
Total punctaj cap. 4			480	24
5				
	5.1		355	17.75
	5.2		220	11
Total punctaj cap. 5			575	28.75
6				
	6.1		1740	87
	6.2		0	0
	6.3		0	0
	6.4		0	0
	6.5		20	1
	6.6		80	4
Total punctaj cap. 6			1840	92
Punctaj general centru:			2895	144.75
4+5+6				

Data: Februarie 2016

Director Centru de cercetare:

Conf.dr. Calin Secui

Secretar științific

s.l. dr. ing. Eva BARLA